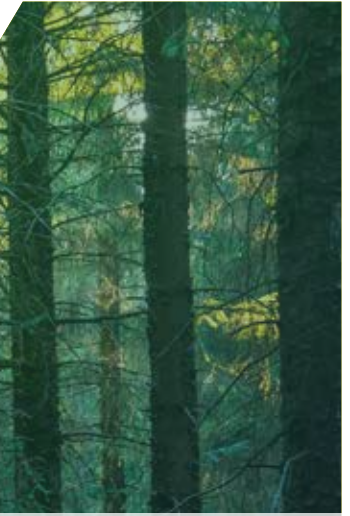
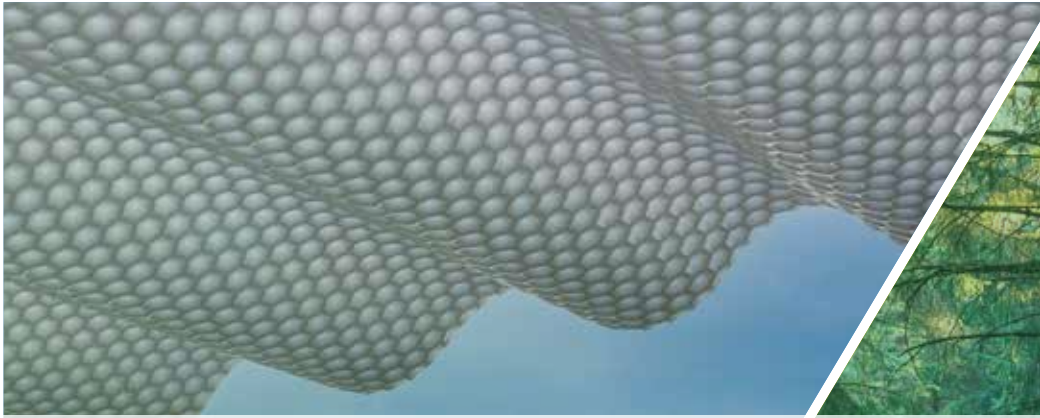


SALUX® *Bio Line*®

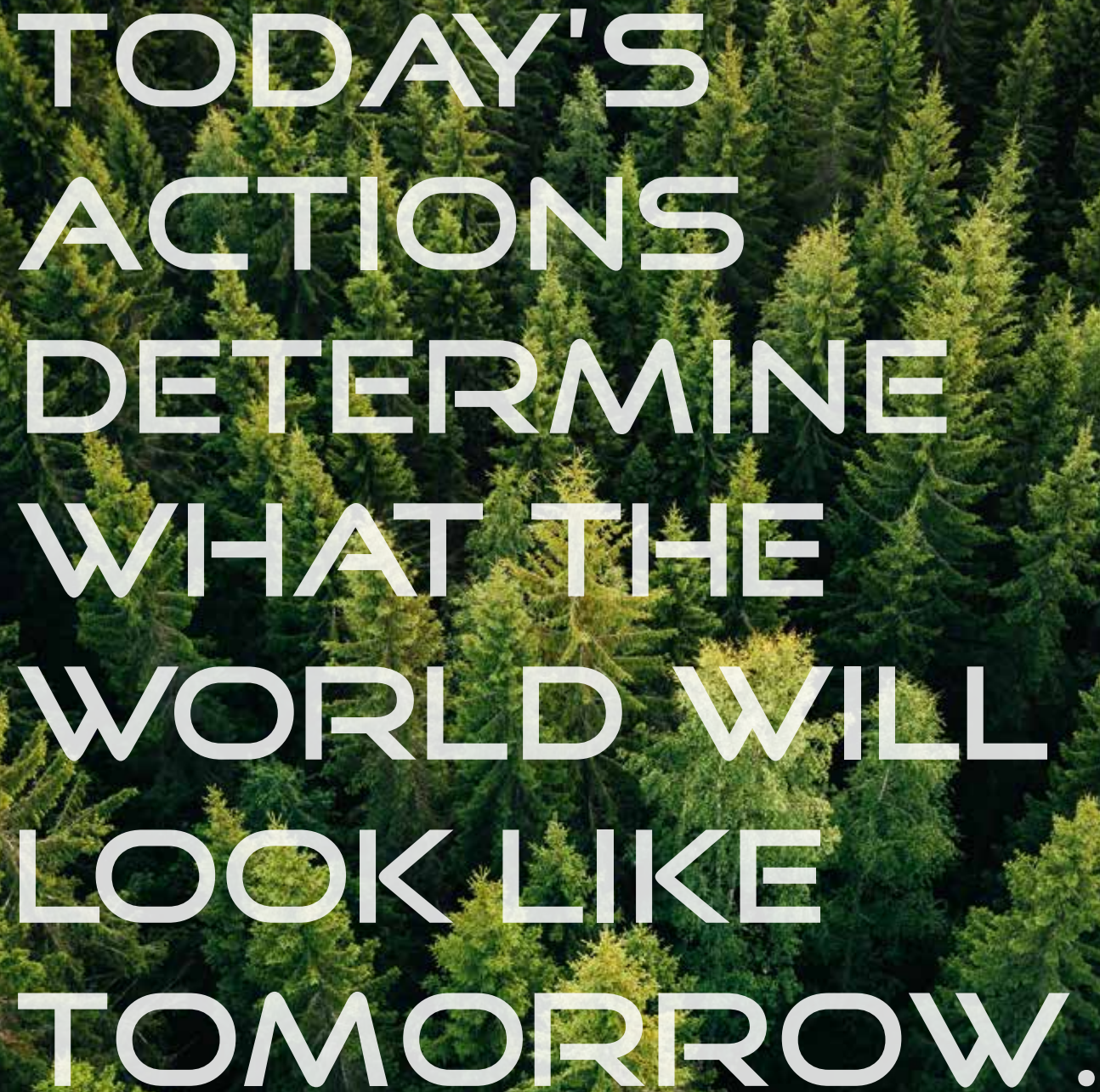


SALUX® GMBH
ALWAYS A SUSTAINABLE
STEP AHEAD

SUSTAINABILITY BROCHURE



MORE THAN PLASTIC.

An aerial photograph of a dense evergreen forest, likely a spruce or fir forest, with a mix of green and yellowish-green foliage. The text is overlaid in a large, white, sans-serif font, centered on the image. The text reads: "TODAY'S ACTIONS DETERMINE WHAT THE WORLD WILL LOOK LIKE TOMORROW." The background is a lush, textured canopy of trees.

TODAY'S
ACTIONS
DETERMINE
WHAT THE
WORLD WILL
LOOK LIKE
TOMORROW.



Family members working in the business

*"We are happy to work today
for the generations of tomorrow."*

As a family business, we are doing everything we can to ensure that the world remains a liveable place for future generations. That is why we try to use our economic activities to achieve sustainable corporate development, offering secure jobs in a healthy environment.

We believe that sustainability applies to all levels of the value chain. Recycling plays a major role in this. We use up to 50% recycled material in production, which is obtained both from products that cannot be sold and from recycled material from other industries. Not only does this save on new raw materials, it also promotes the reuse of valuable resources.

Apart from recycling, research and development are the key factors that support our sustainable approach. At our research and development centre in Sangerhausen, we are always searching for new, innovative raw materials and products. Thanks to this, we are proud to offer all our tried and tested PVC products in an innovative alternative, which replaces 100% of the classic PVC with a sustainable, renewable raw material.



ENERGY MANAGEMENT

For greater energy efficiency

In order to further increase our energy efficiency, we had our energy consumption comprehensively analysed with a certified alternative system. The GUT Zertifizierungsgesellschaft für Managementsysteme mbH has verified the alternative system according to § 4 para. 3 no. 2 SpaEfV based on the comprehensive audit.

ENERGY OPTIMISATION

Small things with a big impact

When talking about environmental protection, people often talk about big changes that will increase sustainability. But when you take a closer look, it is the implementation of a lot of small things that matters when it comes to environmental protection. For example, in 2021 we replaced all of the lighting in our production facilities with LED lights. Not only do these produce more light, but they also save 21.6 KW per hour.



It means that, based on 250 working days in production, a saving of 129,600 kWh per year is achieved, which is equivalent to the consumption of 40 2-person households in Germany. (*Federal Statistical Office, 2019)

We also converted the drives and controls of our production lines to very effective three-phase drives. Because this increases efficiency by up to 20%, an average of up to 60 KW is saved per hour.

Based on 250 working days in production, a saving of 360,000 kWh is achieved, which is equivalent to the consumption of 110 2-person households in Germany. (*Federal Statistical Office, 2019)

Testat

Nach einer Dokumentenprüfung hat die Organisation

SALUX
Ein Unternehmen der von Len Gruppe

Salux GmbH

am Standort
Allstedter Straße 71, 06526 Sangerhausen OT Oberröbblingen

nachgewiesen, dass ein
Alternatives System zur Verbesserung der Energieeffizienz
nach § 3 der SpaEfV
betrieben wird.

Die zugrunde liegenden Angaben und Informationen sind in sich schlüssig und stehen im Einklang mit den Anforderungen der

SpaEfV § 4 Absatz 3 Nr. 2

Alle erhobenen Energiedaten werden fachkompetent, nachvollziehbar und ordnungsgemäß erfasst und bewertet. Bei der Überprüfung wurden keine Abweichungen von den Anforderungen festgestellt.

Das Testat ist in Verbindung mit dem Auditbericht für das Antragsjahr 2022 gültig.

Berlin, 29. November 2022

Prof. Dr.-Ing. Jan Uwe Lieback
Geschäftsführer

Andreas Lemke
Leiter der Zertifizierungsstelle

Nr. i-22-24419

GUTcert Eichenstraße 30 • 12495 Berlin • Germany
Tel. +49 30 2330221-5 • info@gut-cert.de • www.gut-cert.de

afnor
certification



RENEWABLE ENERGY

The sun generates our electricity

Harnessing solar energy will become increasingly important in the future because of its unlimited availability. Solar power does not produce particulate matter. This makes solar a clean energy source.

There are 3159 photovoltaic units on the roofs of our production and office buildings in Sangerhausen, which generate electricity from solar radiation. This way, we can send up to 16% of our consumed electricity back into the grid.



SUSTAINABLE MOBILITY

Electric on the road

Conventional combustion engines cause tremendous harm to our environment, not only by contributing to air pollution, but also by depleting fossil resources. This is why we have decided to convert our company fleet to environmentally friendly hybrid vehicles. Hybrid vehicles allow us to reduce CO2 emissions by up to 40%. Our first hybrid passenger car has made it possible for us to travel short distances purely on electric power and with zero emissions.



RECYCLING

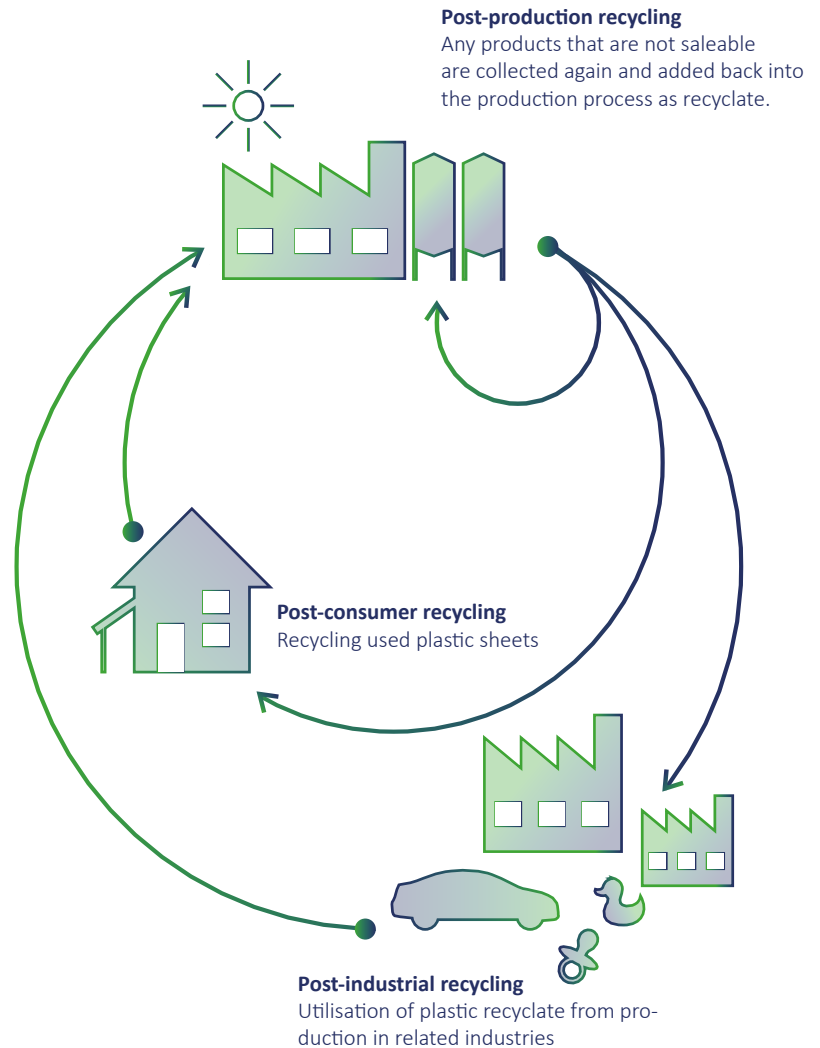
We think in terms of cycles

RECYCLING is very important to us. That is why we use three recycling systems at the same time.

As a manufacturer of plastic products, it is inevitable that a certain amount of non-saleable material will be produced in the production process. In our first cycle, we grind up the material generated when the machines start up and shut down and feed it directly back into production.

Our second cycle involves post-consumer recycling. We can even grind used plastic sheets in our in-house grinding facility and use them to produce new sheets.

The third cycle involves adding recycled material to certain products that originally came from other industries, such as car or toy manufacturing. Not only does this save on new raw materials, it also increases the reuse of valuable resources.



PROJECT:

Recycling waste heat

Working sustainably means planning ahead. This is why we are always on the lookout for ways to run our business even more efficiently and in a more environmentally friendly manner. One of our latest projects focuses on using the

waste heat from our production halls to heat other halls, offices and recreation rooms during the winter months. But we are taking this even further: we would also like to use the waste heat effectively in the summer months in order to convert the surplus thermal energy back into electrical energy.

Recycling taken to the extreme

SALUX® has always recycled. And it has always been common practice to reuse recycled material for production in small quantities. But we now wanted to know: is it possible to produce a multi-wall sheet in which 100% of the polycarbonate has been replaced by recycled material? Yes, it is!



SALUX® 2ND LIFE LINE

Multi-wall sheets made from up to 100% recycled polycarbonate*

Recycling plays a very important role in our new **SALUX® 2nd LIFE LINE** brand, because we replace 100% of the classic polycarbonate with recycled polycarbonate, which, in the interests of sustainability, is lead back into the production cycle by using our modern grinding and filter technology instead of it to dispose of in the traditional way.

In addition to our own recycling material, we also use recycling material from other industries, which would otherwise be disposed of. For this reason, there may be slight color deviations from batch to batch.

*Min. 50%

SALUX® *Eco Life Line*

In our new innovative **SALUX® ECO LIFE LINE** twin-wall sheets, we replace 100% of the conventional polycarbonate with a climate-neutral **ECO LIFE LINE** raw material, which is obtained from biological waste and residues. This enables us to produce particularly sustainable and resource-saving twin-wall sheets, which are 100% recyclable.

The resource-saving twin-wall sheets are not only good for the environment, but also for the end customer. The **SALUX® ECO LIFE LINE** twin-wall sheets have the same properties as classic polycarbonate sheets, which are manufactured on a fossil basis. In terms of properties such as UV protection, high weather and temperature resistance, high impact and hail resistance, they are in no way inferior to classic PC twin-wall sheets.

We regularly check the quality of our products in our in-house laboratory. This is how we ensure that every sheet that leaves our factory meets 100% the requirements of the market.





FUTURE GENERATIONS

We are training!

In addition to treating our environment with care, we also value the preservation of our future by training young people in the area of sustainability. We are happy to pass on our expertise to future generations to ensure a successful professional future for them and thereby counteract the shortage of skilled workers.

We offer a wide variety of apprenticeships. These include:

- ▶ Warehouse Logistics Specialist
- ▶ Warehouse Operator
- ▶ Office communication clerks
- ▶ Wholesale and foreign trade management clerks
- ▶ Industrial Mechanic
- ▶ Materials Tester
- ▶ Plastic and Rubber Process Technician



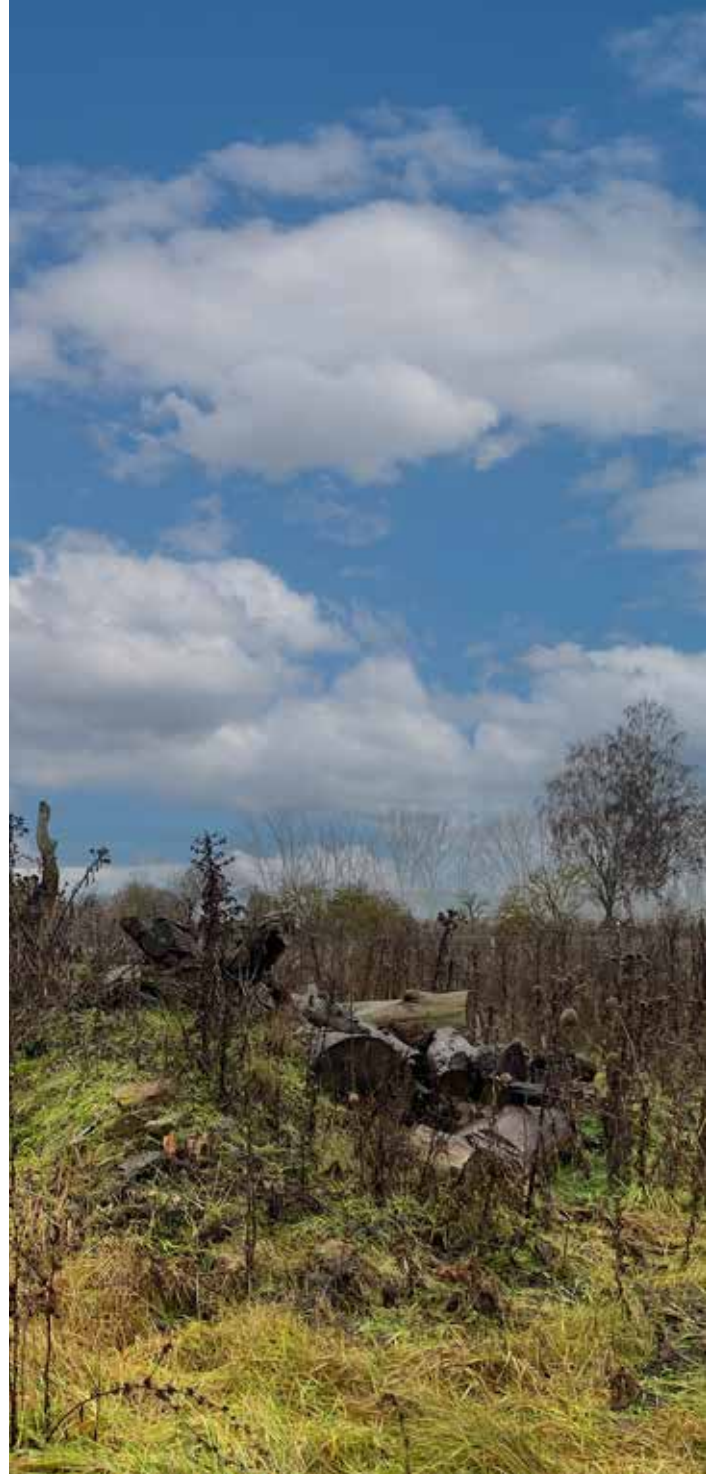
ANIMAL PROTECTION



For greater biodiversity

When we spotted several dozens of rare, strictly protected sand lizards on our company premises, we took the opportunity to set up an area next to our site as a special retreat for these lizards as part of an upcoming construction project. We created a conservation biotope of more than 3,000 square metres in cooperation with an eco-institute. We see this as confirmation that modern production and environmental protection can be reconciled.

Being a company in the industrial sector, we feel it is very important not to displace any habitats, but rather to establish a coexistence between humans and animals. It is therefore particularly important to us to preserve the habitat of the sand lizards long term.



Making progress with research

Our goal is to not only produce high-quality plastic sheets of continuously improving quality but to also develop new, innovative products. Our highly qualified employees are constantly researching how our plastic sheets can be produced to be even more durable, break-resistant and, most importantly, even more sustainable.

SALUX® *Bio Line*®

The ecological alternative to classic PVC

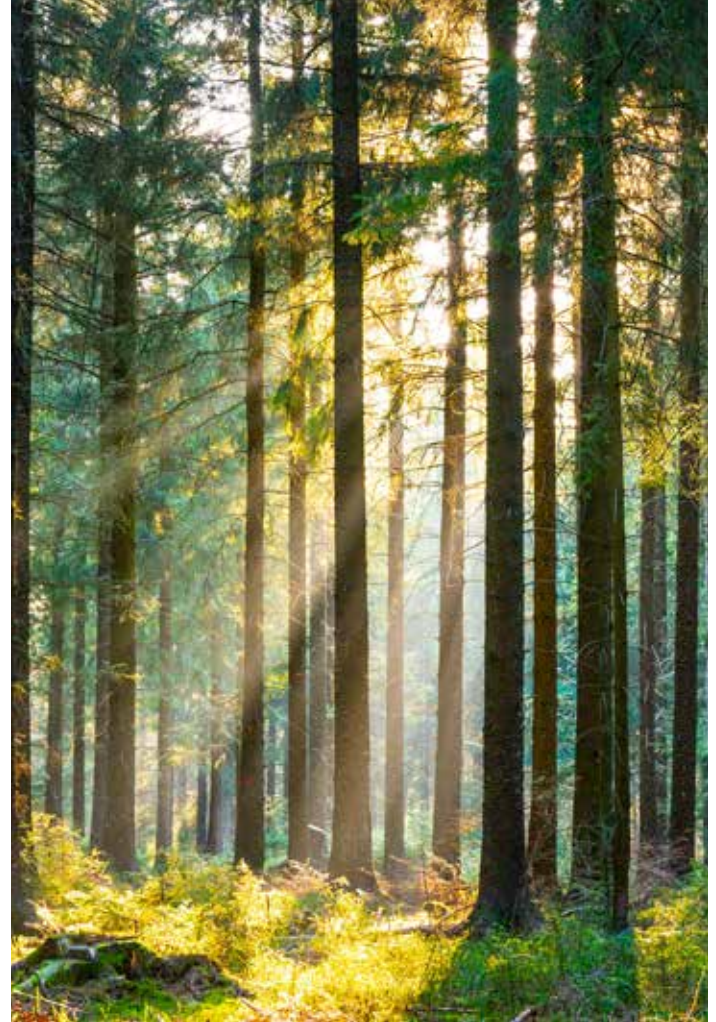
Polyvinyl chloride has been used successfully with high customer satisfaction for our range of corrugated sheets for decades. The material is 100% recyclable and has many advantages, such as high break resistance, durability, and ease of processing, as well as resistance to chemicals and corrosion.

We have managed to produce all of these desirable and indispensable properties in an innovative, ecological alternative for even greater sustainability.

This means that we also have the corrugated sheets that you, your customers, the market and ultimately the environment are looking for.

Our **BIO LINE**® raw material is made from organic, renewable raw materials and replaces 100% of the conventional PVC in our products. In this way, our **BIO LINE**® products combine sustainability with all the advantages of classic PVC sheets.

*compared to S-PVC from fossil fuels



- ✓ Replaces 100% of conventional PVC
- ✓ 100% recyclable
- ✓ Odourless
- ✓ Weatherproof
- ✓ >90% reduction of greenhouse gases*
- ✓ Has all the advantages of conventional PVC

Bio Line[®] ROOFING

Our sustainable alternative means you can complete your building project with an even better carbon footprint and with even greater sustainability.



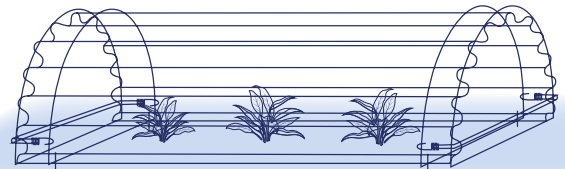
Bio Line[®] FLOOR PROTECTION MATS

Our **SALUX® FLOOR BIO LINE®** floor protection mats are made from high quality, sustainable **BIO LINE®** material and protect a wide variety of floor coverings from wear and tear as well as dirt. Our floor protection mats are used for many different applications and are 100% recyclable.



Bio Line[®] COLD FRAMES

Our sustainable **SALUX® COLD FRAME** made from our **BIO LINE®** material can be used all year round for cultivating different types of vegetables. It is very durable, weatherproof and easy to store away in the off-season, so that it can easily be reused the following year. Just like all our **BIO LINE®** products, the **COLD FRAME** is 100% recyclable.





Salux GmbH
Allstedter Str. 71
OT Oberröblingen
06526 Sangerhausen

Germany

Phone: +49 (0) 34 64 - 54 15-0
Fax: +49 (0) 34 64 - 54 15-20
Email: info@salux.de
www.salux.de/en

Follow us  